

Pineware[®]

INSTRUCTIONS AND WARRANTY



MODEL NO. PMF40

PINEWARE MIST FAN

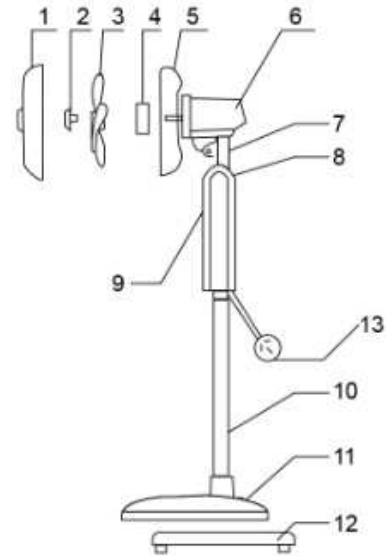
GENERAL SAFETY INSTRUCTIONS

- Before using this 40cm Pineware Mist fan, these instructions should be carefully read to ensure that the best results are obtained.
- Please keep these instructions; the guarantee certificate; the sales receipt; and if possible the gift box with the inner packaging.
- The appliance must only be used as intended in accordance with the enclosed operating instructions.
- Before plugging in the fan into the main electrical supply, check that the voltage and power supply comply with the specification indications on the rating plate of the appliance.
- Do not use the fan with damp or wet hands.
- Always place the fan on a stable, flat surface. Also ensure that the surface can take the weight of the unit during use.
- Always make sure the fan is securely in place before it is switched on.
- The 40cm Pineware Mist Fan is intended for **DOMESTIC USE ONLY** and should **NOT** be used for commercial purposes.
- Switch off the fan and remove the power plug from the main electrical supply whenever it is not in use, before cleaning or when changing accessories.
- Do not use the fan outdoors.
- Test the fan and the cable regularly for damage. If there is damage of any kind, the fan should not be used.
- Under no circumstances must the fan, the power cord or the power plug be placed in or come into contact with water or other liquid.
- Adequate air space should be provided for air circulation.
- Do not allow the power cord to hang over sharp table edges or come into contact with hot surfaces.
- Under no circumstances must the fan come into contact with curtains, clothing, dishes, towels or other flammable material during use.
- The 40cm Pineware Mist Fan is not intended for use by persons (including children) with reduced physical or sensory capabilities or lack of experience and knowledge unless they are under supervision or given instructions concerning the use of the fan by a person responsible for their safety.
- Close adult supervision is necessary when the fan is being used by children.
- To unplug the 40cm Pineware Mist Fan, grasp the plug firmly and remove it from the main electrical supply. **DO NOT PULL THE CORD.**
- Repairs to the 40cm Pineware Mist Fan should only be performed by a qualified Electrician.
- Keep these instructions in a safe place for future reference.

COMPONENTS

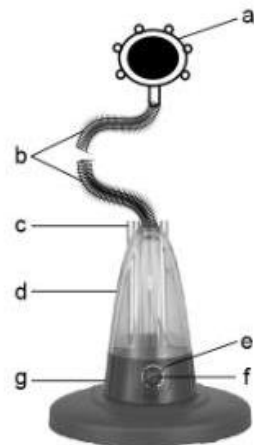
Main Housing

- 1. Front Grill
- 2. Fan blade nut
- 3. Fan blade
- 4. Rear grill lock nut
- 5. Rear grill
- 6. Motor body
- 7. Tilt neck
- 8. Switch housing
- 9. Display & Control Panel
- 10. Support poles
- 11. Base
- 12. Base weight
- 13. Power cord & plug



Water components

- a) Mist Outlet
- b) Mist delivery hose
- c) Water tank cap
- d) Water tank
- e) Humidifier indicator light
- f) Variable mist setting switch
- g) Humidifier power base

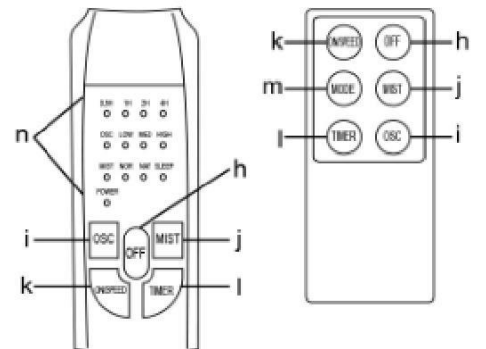


Main unit control and remote control

- h) OFF – Main power OFF button
- i) OSC – Oscillation ON/OFF button
- j) MIST – Misting ON/OFF button
- k) ON/SPEED – Main power ON button/Speed selector
- l) TIMER – Timer setting button
- m) MODE – Mode selector (Only on remote control)
- n) Indicator lights/status lights (Only on main unit)

Main unit control panel Remote

Main Unit Control Panel Remote Control



ASSEMBLING YOUR FAN

- Unpack all the parts of the fan and remove the packaging.
- Insert the 2 Standing Bars into the Base with 2 screws in each bar. Note that each Standing Bar has 2 holes on one side. This side with the holes must be installed into the base. (Each Standing Bar comes with 2 screws already fitted. Unscrew the screws from the Standing Bars and then insert the Standing Bars into the Base).



2 screws in each Standing Bar



Remove screws first then attach Standing Bars to the Base. Tighten the screws after fixing Standing Bars to the Base.

- Place the weight under the Base then assemble with 4 screws provided.



- Ensure that the weight is correctly assembled as depicted in diagrams below.



INCORRECT



CORRECT

- Assemble the main unit onto the 2 Standing Bars. Note that there are 2 screws on the Main Unit which the installer must loosen before installing. After installing, these 2 screws can be tightened.



- Place the Humidifier Power Base onto the Base.



- Remove the Fan Blade Nut (2) and the Rear Grill Lock Nut (4) from the Motor Shaft Spindle (n).



- Fit the Rear Grill (5) by positioning it onto the location pins (p). Secure the grill (5) to the Motor Body with the Grill Lock Nut (4). Note: The handle on the Rear Grill (5) must face upward.



- Push the Fan Blade (3) onto the Motor Shaft Spindle (n) by matching the Slots on the Base of the Fan Blade with the Shape Pin (o).




- Secure the Blade (3) with the fan Blade Nut (2) by turning it COUNTER - CLOCKWISE. Check that the fan blade rotates freely by turning it with your hand.
- Open securing clips around the front grill and loosen the clip screw at the top of the front grill. Position the top clip on the uppermost part of the rear grill. Push the top clip down and press rim of the front grill onto the rear grill. Close all the clips and tighten the safety screw.
- Place the Water Tank on the Humidifier Power Base.
- Connect the Mist Delivery Hose to the Mist Outlet and the Cap of Water Tank.

- Place the Cap of Water Tank on the Water Tank.
- Remove barrier cover of the remote control.
- The 40cm Pineware Mist Fan is now ready to use.

OPERATING THE MIST FAN

- Remove the Water Tank from the Humidifier Power Base, turn it up-side down and you will see a small plastic cover.
- Open the cover by turning it in a counter-clockwise direction.
- Fill the Water Tank with clean water.
- Close the plastic cover by tightening it in a clockwise direction. Note that there is a white silicone ring which must not be loosened when filling the Water Tank with water.
- Place the Water Tank back onto the Humidifier Power Base.
- Plug the Mist Fan into the main electrical supply. A “beep” sound will be heard indicating that the Mist Fan is connected to the power.
- The “POWER” indicator light on the Main Control Panel will illuminate.
- Now the Mist Fan can be switched on either on its Main Control Panel or by the Remote Control.
- Press the ON button to switch the Mist Fan on.
- By default, the Mist Fan will be switched ON in
 - Low Speed Setting,
 - Fixed Direction and
 - Normal Wind mode setting
- After switching on the Mist Fan you can select different Speed Settings or the Wind Mode that you prefer. The table below shows which switches perform which speed and wind functions:

Remote Control	Main Control Panel	Indicator Lights	Features
OFF		POWER	Standby mode. The fan is ready to use but has not started operating yet.
ON/SPEED		LOW MED HIGH	Press Once - Low Wind speed setting Press Twice - Medium Wind speed setting Press Three Times - High Wind speed setting
OSC		OSC	Press Once - The Fan head will oscillate When pressing again - The Fan head will be fixed in one direction only
MIST		MIST	Press Once - The Fan will generate mist When pressing again -

		The Fan will stop generating mist
TIMER	0,5H 1H 2H 4H	Every press represents a time increase of 30 minutes. Max. time on the timer is 7,5 hours. When pressing again while it is set to 7,5 hours all time settings will be canceled.
Remote Control Only MODE	NOR NAT SLEEP	For selecting different Wind outputs: - Normal Wind Mode - Natural Wind Mode - Sleep Wind Mode
<u>Variable Mist Setting Switch (On the Power Base Only)</u>		To adjust the volume of mist to be generated: Counter-clockwise - Less Mist Volume Clockwise - Greater Mist Volume

- When there is no water in the Water Tank, the Humidifier power Base will stop working and the indicator Light will change from Green to Red.
- Should this occur, switch OFF the Mist Fan and re-fill the Water Tank with water so you can continue to use the Mist function as and when desired.
- The user can adjust the tilt angle by pushing downward from the top of the Grill or by pulling upward from the bottom of the Grill.

Caution: The 40cm Pineware Mist Fan should always be switched off when making this adjustment.

CLEANING

- Switch off and unplug from the power supply before assembling or disassembling and before cleaning.
- Keep the air vents at the rear of the main body free from dust or fluff. Use a vacuum cleaner to remove these when necessary. Do not probe any opening to remove fluff.
- Fan component parts should be cleaned using mild soap and a damp cloth or sponge.
- Do not allow any water or other liquid to enter the motor housing.
- Remove soapy film with a damp cloth or sponge and then dry thoroughly.

CAUTION: Do not use harsh detergents, chemical cleaners or solvents as they may damage the surface finish of the fan components.

SPECIFICATIONS

RATED VOLTAGE	AC 220~240V
RATED FREQUENCY	50~60Hz
RATED POWER	70W = 30 W (mist power) + 40W (fan power)
TANK CAPACITY	2L

**PLEASE AFFIX YOUR PROOF OF PURCHASE/RECEIPT HERE
IN THE EVENT OF A CLAIM UNDER WARRANTY THIS RECEIPT MUST BE PRODUCED.**

W A R R A N T Y

1. Home of Living Brands (Pty) Limited (“Home of Living Brands”) warrants to the original purchaser of this product (“the customer”) that this product will be free of defects in quality and workmanship which under normal personal, family or household use and purpose may manifest within a period of 1 (one) year from the date of purchase (“warranty period”).
2. Where the customer has purchased a product and it breaks, is defective or does not work properly for the intended purpose, the customer must notify the supplier from whom the customer bought the product (“the supplier”) thereof within the warranty period. Any claim in terms of this warranty must be supported by a proof of purchase. If proof of purchase is not available, then repair, and/or service charges may be payable by the customer to the supplier.
3. The faulty product must be taken to the supplier's service centre to exercise the warranty.
4. The supplier will refund, repair or exchange the product in terms of this warranty subject to legislative requirements. This warranty shall be valid only where the customer has not broken the product himself, or used the product for something that it is not supposed to be used for. The warranty does not include and will not be construed to cover products damaged as a result of disaster, misuse, tamper, abuse or any unauthorised modification or repair of the product.
5. This warranty will extend only to the product provided at the date of the purchase and not to any expendables attached or installed by the customer.
6. If the customer requests that the supplier repairs the product and the product breaks or fails to work properly within 3 (three) months of the repair and not as a result of misuse, tampering or modification by or on behalf of the customer, then the supplier may replace the product or pay a refund to the customer.
7. The customer may be responsible for certain costs where products returned are not in the original packaging, or if the packaging is damaged. This will be deducted from any refund paid to the customer.

HOME OF LIVING BRANDS (PTY) LTD (JOHANNESBURG)

JOHANNESBURG

TEL NO. (011) 490-9600

CAPE TOWN

TEL NO. (021) 552-5161

DURBAN

TEL NO. (031) 792-6000